



A unique collection
proudly designed and handmade in Belgium
by Sophie Hellebaut

collón



OUR DEDICATION TO REFINED CRAFTSMANSHIP

Welcome to the world of Atelier Collón — where Belgian craftsmanship meets a quiet, architectural language.

Founded by designer and woodturner Sophie Hellebaut, the atelier creates sculptural objects shaped by material, proportion and time.

What began in solid wood has evolved into a broader universe. Alongside American walnut and French oak, Atelier Collón explores mineral forms in concrete — designed for both indoor and outdoor use — and a refined candle collection that introduces scent as an extension of space.

Each piece is handcrafted in Belgium, where precision and restraint define the process. Some objects are refined to a soft, smooth finish; others retain the raw expression of the material — its grain, its tension, its natural irregularities.

Together, they form a coherent language — a study in rhythm, texture and balance. From vases to lighting and candles, every piece is designed to integrate effortlessly into a space — not as decoration, but as presence.

Objects that endure. Forms that speak quietly.

ó

The name 'Collón' originates from the idea that trees in forests don't stand alone. As the majestic *columns* ('*kolóna*' in Greek) of a temple resemble the vertical presence of trees in a forest, both showcase a sense of grandeur and symmetry in their surroundings. Just as the temple's columns provide support and structure, trees play a vital role in maintaining the ecosystem and contributing to the beauty of natural landscapes.





PURE COLLECTION

The PURE collection focuses on precision and refinement, where each piece is carefully smoothed and polished to a flawless finish, exuding sophistication and timeless elegance.



PILAR VASE INDOOR / OUTDOOR

The PILAR vase series is meticulously handmade from identical **American walnut** or **solid oak** components, coming together in a refined, cohesive design. At our atelier, we finish each piece with care: the American walnut is treated with a natural oil to enhance its rich, warm tones, while the oak is available in a range of shades, from natural to deep charred black. These finishes are achieved using a protective, health-safe oil. Additionally, we include a glass container for displaying fresh flowers, ensuring your vase is protected from water damage.

The collection also includes a version crafted from a special **concrete** composition, developed exclusively for this series. This edition retains the sculptural, rhythmic signature of PILAR, while offering a durable material suitable for both indoor and outdoor use. Its refined silhouette and natural texture bring an understated architectural presence to any environment — from living rooms and hallways to gardens and terraces — seamlessly carrying the essence of PILAR into every space it inhabits.





PILAR VASE LARGE & LOW | CONCRETE



PILAR VASE QUATRO | WALNUT



PILAR VASE MEDIUM | CHESTNUT | EBONY



PILAR VASE MEDIUM

Height **26cm**
Diameter **16cm**
Opening diameter **10cm**
Depth opening **22,5cm**
Weight **2 kg**
Glass container included **Yes**
Environments **Indoor**



PILAR VASE LOW

Height **18cm**
Diameter **21cm**
Opening diameter **12cm**
Depth opening **12cm**
Weight **2,5 kg / 9 kg**
Glass container included **Yes**
Environments **Indoor / Outdoor**



PILAR VASE QUATRO

Height **24cm**
Diameter **21cm**
Opening diameter **12cm**
Depth opening **18cm**
Weight **3,5 kg**
Glass container included **Yes**
Environments **Indoor**



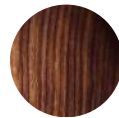
PILAR VASE LARGE

Height **30cm**
Diameter **21 cm**
Opening diameter **12 cm**
Depth opening **24 cm**
Weight **5 kg / 14 kg**
Glass container included **Yes**
Environments **Indoor / Outdoor**

AMERICAN WALNUT



AMERICAN WALNUT



AMERICAN WALNUT



AMERICAN WALNUT



OAK



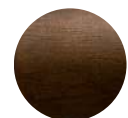
CHARRED BLACK OAK

CHESTNUT OAK

CONCRETE



CONCRETE



MARRON OAK



NATUREL OAK



PILAR CANDLES INDOOR / OUTDOOR

Designed as a natural extension of the PILAR LOW vases, the candle collection introduces a new layer of atmosphere — where object, scent and light come together.

The collection consists of both indoor and outdoor candles, each developed with a distinct intention.

The **indoor candle** features four fine wicks, creating a soft, even glow and a subtle diffusion of scent.

Available in *Everwood*, a warm and layered fragrance with a quiet woody depth — enveloping, refined and calming.

The **outdoor candle** is designed with a single, thicker wick, ensuring a stable flame in open air conditions.

Undisturbed offers a botanical blend of citronella, lavender, eucalyptus and sage — naturally helping to repel mosquitoes, while maintaining a balanced and elegant scent experience.

Each candle is exclusively hand-poured in Belgium by Mon Dada, using a high-quality plant-based wax.

Developed with care and precision, the collection reflects a shared approach to craftsmanship, material and proportion.

A functional object, redefined — extending the life of the vase into a new moment.





UMI LIGHTING

Introducing the UMI collection: a distinctive combination of a solid smooth **oak** base with a high-quality lampshade.

Provided with a dimmer switch, this design seamlessly integrates simplicity with functionality, as we meticulously handcraft each lamp in Belgium, showcasing our dedication to precision in wood craftsmanship.

We have selected four beautiful fabrics for the lampshade, which look stunning whether the lamp is on or off, and perfectly complement the wooden base. The oak base is available in four natural colors.

Available in 4 sizes.



LINEN SHADE | CHESTNUT BASE | MARRON BASE



CHARRED BLACK OAK



CHESTNUT OAK



MARRON OAK



NATUREL OAK



LINEN - DETAIL TOP



MOUTON & LINEN



CHESTNUT BASE | LINEN

WOOD BASE



CHARRED BLACK OAK



CHESTNUT OAK



MARRON OAK



NATUREL OAK

LAMPSHADE



LINEN



MOUTON



FELTÉ





LINEN SHADE | CHESTNUT BASE



LINEN SHADE | MARRON BASE



LINEN SHADE | CHESTNUT BASE



LINEN SHADE | MARRON BASE

UMI LOW MIDI

Height	23cm
Diameter shade	24cm
Diameter base	26cm
Material base	Solid oak
Weight	2kg
Bulb specifics	LED 4,5W E27 fitting 2100K Dimmable
Cord	Linen
Cord length	160cm
Socket & plug	Standard for EU
Switch	Dimmer
Environments	Indoor dry location

UMI LOW TALL

Height	34cm
Diameter shade	30cm
Diameter base	36cm
Material base	Solid oak
Weight	3,5kg
Bulb specifics	LED 4,5W E27 fitting 2100K Dimmable
Cord	Linen
Cord length	160cm
Socket & plug	Standard for EU
Switch	Dimmer
Environments	Indoor dry location

UMI HIGH MIDI

Height	44cm
Diameter shade	20cm
Diameter base	26cm
Material base	Solid oak
Weight	2kg
Bulb specifics	LED 4,5W E27 fitting 2100K Dimmable
Cord	Linen
Cord length	160cm
Socket & plug	Standard for EU
Switch	Dimmer
Environments	Indoor dry location

UMI HIGH TALL

Height	74cm
Diameter shade	30cm
Diameter base	36cm
Material base	Solid oak
Weight	3,5kg
Bulb specifics	LED 4,5W E27 fitting 2100K Dimmable
Cord	Linen
Cord length	160cm
Socket & plug	Standard for EU
Switch	Dimmer
Environments	Indoor dry location



ORI FINE TABLE LAMP | LINEN SHADE | WALNUT BASE

ORI LIGHTING

Born from the iconic PILAR vase, ORI carries the same architectural language: powerful, solid, and timeless. Where PILAR was an ode to the column as a symbol of strength, ORI transforms that essence into the realm of light.

ORI stands for origin and illumination – a new dawn. The collection unites monumental simplicity with refined details, turning each piece into a luminous statement within any space.

Its base is crafted from **solid premium American walnut** or **French oak**, grounding the design in natural elegance and permanence. The shade can be tailored to taste, with a choice of three luxurious fabrics, allowing ORI to adapt seamlessly to different interiors.

Massive in presence yet delicate in glow: ORI is more than lighting. It is a sculptural gesture that translates the stillness of wood into the radiance of light.

The design also **allows for variation in height** — by playing with the number of rings, each lamp can take on a taller or more compact form, adding a sculptural rhythm to the space. Price upon request.

Available in 3 sizes.

Also available in custom proportions
— price upon request





LAMPSHADE



LINEN



MOUTON



FELTÉ



LINEN SHADE | WALNUT BASE

ORI FINE TABLE LAMP

Height	56cm
Diameter shade	45cm
Material base	AMERICAN WALNUT OAK
Bulb specifics	LED 4,5W E27 fitting 2100K Dimmable
Cord	Linen
Cord length	160cm
Socket & plug	Standard for EU
Switch	Dimmer
Environments	Indoor dry location

AMERICAN
WALNUT



OAK



CHARRED BLACK
OAK



CHESTNUT
OAK



MARRON
OAK



NATUREL
OAK



LINEN SHADE | WALNUT BASE

ORI GRAND TABLE LAMP

Height	63cm
Diameter shade	45 cm
Material base	AMERICAN WALNUT
Bulb specifics	LED 4,5W E27 fitting 2100K Dimmable
Cord	Linen
Cord length	160cm
Socket & plug	Standard for EU
Switch	Dimmer
Environments	Indoor dry location

AMERICAN
WALNUT



LINEN SHADE | WALNUT BASE

ORI FLOOR LAMP

Height	140cm
Diameter shade	60cm
Material base	AMERICAN WALNUT
Bulb specifics	LED 4,5W E27 fitting 2100K Dimmable
Cord	Linen
Cord length	180cm
Socket & plug	Standard for EU
Switch	Dimmer
Environments	Indoor dry location

AMERICAN
WALNUT







PILAR LIGHTING

Within the PURE collection, Atelier Collón presents the PILAR lighting piece, crafted from repeating elements in **American walnut or solid oak** that form the base of the lamp. With its balanced composition and architectural presence, the PILAR lamp radiates serenity, embodying both a brutalist aesthetic and refined elegance.

This lamp is available in four sizes—two table lamps, and two floor lamps—offering versatility for different interior settings. It comes in American walnut or solid French oak in four carefully selected finishes, enhancing its natural yet timeless appeal. Additionally, the lampshade is available in four high-quality fabrics, each thoughtfully curated to complement the warmth and character of the wood.

The combination of precise craftsmanship and premium materials makes our PILAR lighting collection a striking yet harmonious addition to any space.

PILAR TABLE LAMP MIDI | WALNUT BASE | LINEN SHADE



CHESTNUT OAK BASE & LINEN LAMP SHADE

WOOD BASE



AMERICAN
WALNUT



EBONY
OAK



CHESTNUT
OAK



MARRON
OAK



NATUREL
OAK

LAMP SHADE



LINEN



MOUTON



FELTÉ



DETAIL CORD - SOCKET



LINEN SHADE | CHESTNUT OAK BASE



MOUTON SHADE | CHESTNUT OAK BASE



LINEN SHADE | CHESTNUT OAK BASE



LINEN SHADE | CHESTNUT OAK BASE

PILAR TABLE LAMP MIDI

Height **31 cm**
 Diameter shade **30cm**
 Material base **OAK AMERICAN WALNUT**

Bulb specifics **LED 4,5W E27 fitting 2100K Dimmable**

Cord **Linen**
 Cord length **160cm**
 Socket & plug **Standard for EU**
 Switch **Dimmer**
 Environments **Indoor dry location**

PILAR TABLE LAMP TALL

Height **44cm**
 Diameter shade **45cm**
 Material base **OAK AMERICAN WALNUT**

Bulb specifics **LED 4,5W E27 fitting 2100K Dimmable**

Cord **Linen**
 Cord length **160cm**
 Socket & plug **Standard for EU**
 Switch **Dimmer**
 Environments **Indoor dry location**

PILAR FLOOR LAMP MIDI

Height **90cm**
 Diameter shade **60cm**
 Material base **OAK AMERICAN WALNUT**

Bulb specifics **LED 4,5W E27 fitting 2100K Dimmable**

Cord **Linen**
 Cord length **180cm**
 Socket & plug **Standard for EU**
 Switch **Dimmer**
 Environments **Indoor dry location**

PILAR FLOOR LAMP TALL

Height **140cm**
 Diameter shade **60cm**
 Material base **OAK AMERICAN WALNUT**

Bulb specifics **LED 4,5W E27 fitting 2100K Dimmable**

Cord **Linen**
 Cord length **180cm**
 Socket & plug **Standard for EU**
 Switch **Dimmer**
 Environments **Indoor dry location**



LIMITED EDITION **QUADRA SAUL**

This edition pays **homage** to one of Sophie's earliest designs in wood, now translated into stone.

Originally designed in wood, this set is now realised - in Belgium- in **muschelkalk**, a natural limestone with a quiet, architectural presence.

The exclusive design consists of four elements. Their geometry allows for open-ended combinations, shifting the object between composition and structure.

Conceived as an art object, the set is modular yet autonomous.





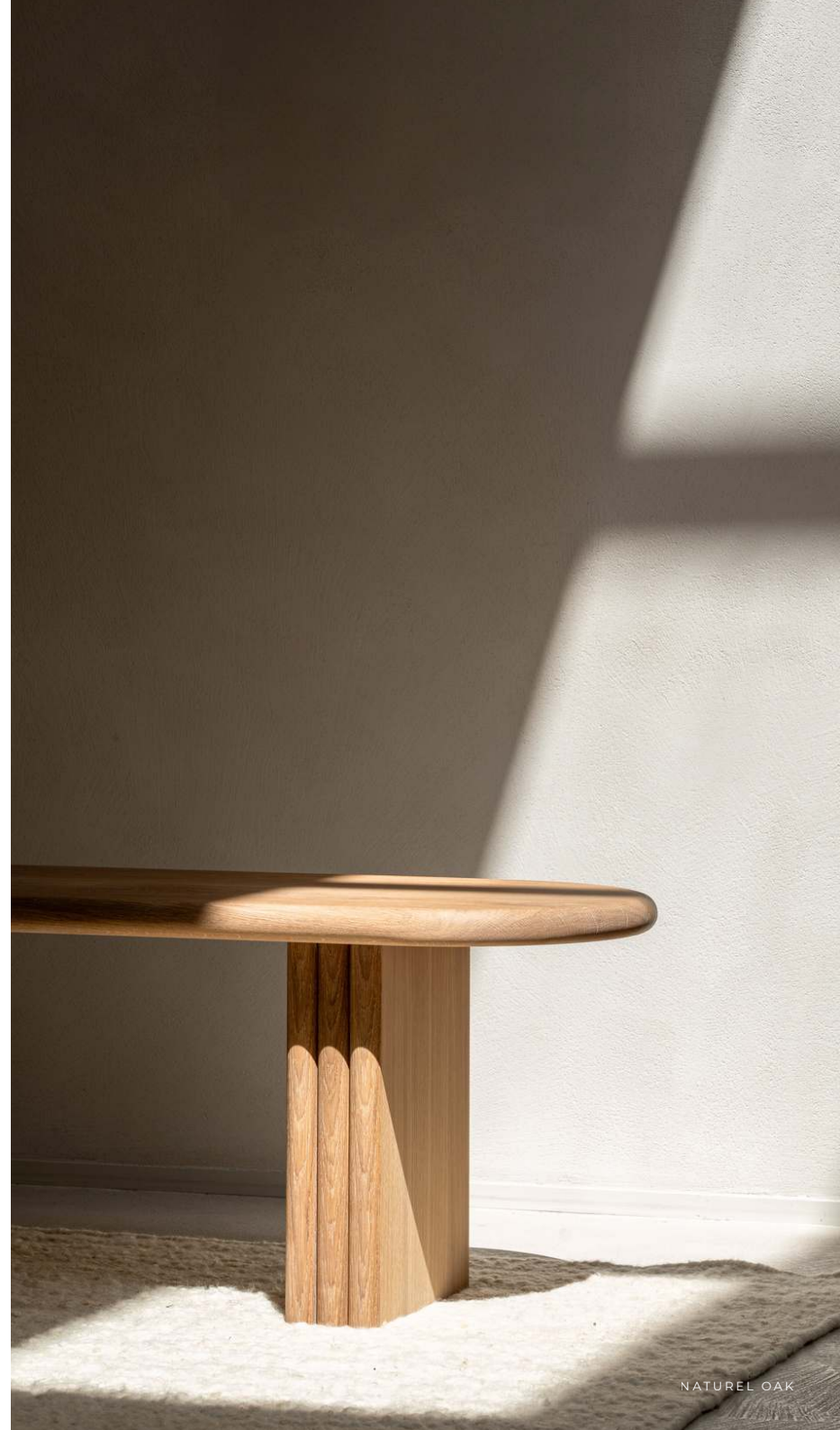
NATUREL OAK

PILAR BENCH

In our PILAR collection, we proudly present our exquisite bench, a fusion of natural beauty and timeless charm. Crafted from **American walnut or French oak** wood, this versatile piece is available in various lengths, allowing you to tailor it to your unique style and preference.

With its walnut or oak frame and seamless solid walnut or oak surface, this indoor bench embodies craftsmanship and aesthetics, adding a touch of sophistication to any space. For added comfort, bespoke cushions can be included, enhancing both style and warmth. What's even more exciting is its adaptability: this elegant model can be designed in smaller sizes, transforming it into a stylish side table.

Available in a range of measurements.
Customization upon request.





Length **140 - 240cm**
Height **45cm**
Width **45cm**
Material **AMERICAN WALNUT**
OAK
Environments **Indoor**



AMERICAN
WALNUT



EBONY
OAK



CHESTNUT
OAK



MARRON
OAK



NATUREL
OAK



PILAR BENCH | EBONY



Height cushion
Filling
Removable cover
Care instructions
Environments

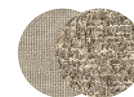
8cm
Pantera® cold foam
Yes
Hand wash is recommended
Indoor



UNI
BOUCLÉ



UNI
TOILE



COMBO
TOP BOUCLÉ
BOTTOM & SIDE TOILE

PILAR CUSHIONS

Each cushion in the PILAR collection is not only made from the finest **Flemish fabrics** but is also handcrafted and custom-made near the weaving mill, ensuring unparalleled quality and craftsmanship. The cushions add a layer of warmth to the furniture ensemble, providing softness, comfort, and a pleasant touch with their luxurious Pantera® filling.

Get creative by combining round and lounge cushions, and transform your PILAR bench into a inviting seating area in no time. Our atelier is also able to create bespoke cushions from your own fabrics, adding a personalized touch to your project. Please feel free to contact us for a quote if desired.

Available in a range of measurements.

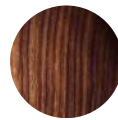
Customization upon request.





PILAR CONSOLE | AMERICAN WALNUT

Length **140cm**
Width **40cm**
Height **80cm**
Material **AMERICAN WALNUT**
OAK
Environments **Indoor**



AMERICAN
WALNUT



EBONY
OAK



CHESTNUT
OAK



MARRON
OAK



NATUREL
OAK

PILAR CONSOLE

Also part of the PILAR collection is a console table, featuring the same distinctive repeating elements that define the collection. Crafted from **American walnut or French oak**, available in four natural finishes, this piece embodies both sculptural presence and refined simplicity.

With its sleek yet architectural design, the PILAR console table effortlessly adapts to various interiors. Whether placed in an entryway to create an inviting first impression, styled behind a sofa as a subtle statement piece, or used to display cherished objects in a hallway, its versatility makes it a timeless addition to any space.

Designed for both function and aesthetics, this table highlights the beauty of solid wood through precise craftsmanship and thoughtful proportions.

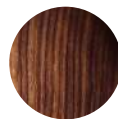
Available in a range of measurements.
Customization upon request.





PILAR DESK | CHESTNUT OAK

Length **100cm**
Width **60cm**
Height **75cm**
Material **AMERICAN WALNUT
OAK**
Environments **Indoor**



AMERICAN
WALNUT



EBONY
OAK



CHESTNUT
OAK



MARRON
OAK



NATUREL
OAK

PILAR DESK

The PILAR collection also includes a desk, featuring the same signature repeating elements found in other PILAR pieces. Crafted from **American walnut or French oak**, this desk is available in several finishes, each enhancing the wood's warmth and authenticity.

With its sculptural yet functional design, the PILAR desk seamlessly blends into various interiors. Whether placed in a dedicated home office, a quiet reading nook, or as a refined workspace within a living area, its compact form offers both practicality and aesthetic appeal. The structured yet minimal silhouette makes it an elegant statement piece, perfect for those who appreciate thoughtful craftsmanship and timeless design.

Available in a range of measurements.
Customization upon request.

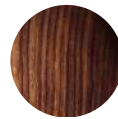


CHESTNUT OAK



PILAR SIDE TABLE | CHESTNUT OAK

Diameter **50cm**
Height **47cm**
Material **AMERICAN WALNUT OAK**
Environments **Indoor**



AMERICAN WALNUT



EBONY OAK



CHESTNUT OAK



MARRON OAK



NATUREL OAK

PILAR SIDE TABLE

In our PILAR collection, we proudly present our elegant side table, a perfect blend of natural warmth and timeless design. Available in **American walnut or French oak**, this versatile piece brings a sense of harmony to any interior.

With its seamless round surface and sturdy solid wooden frame, the side table embodies both functionality and aesthetics. Its compact yet striking presence makes it an ideal companion to a sofa, bed, or lounge chair. Whether standing alone or paired with other pieces from the PILAR collection, this table adds a refined touch to any space.

Available in a range of measurements.
Customization upon request.



CHESTNUT OAK



RAW COLLECTION

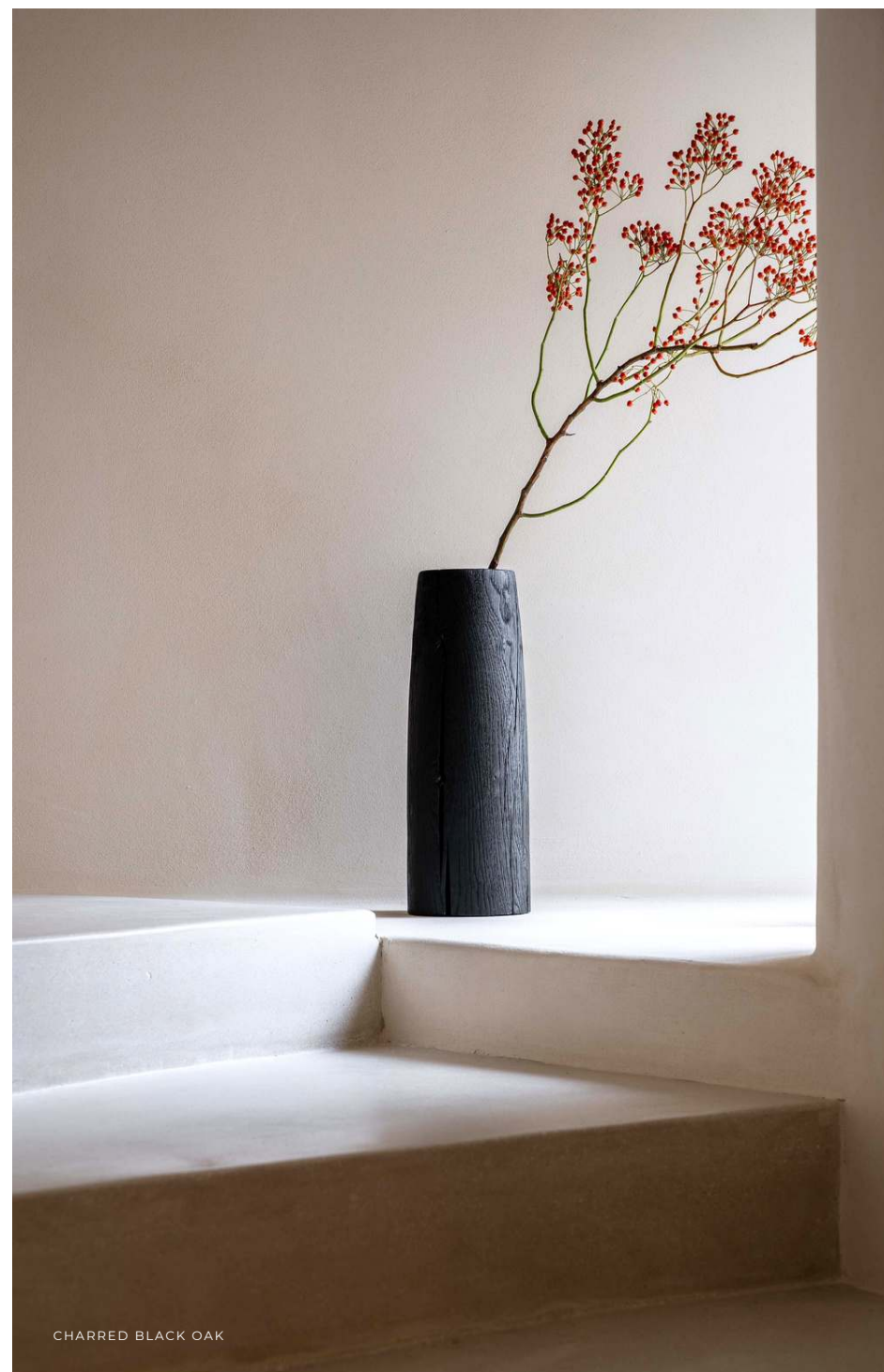
In contrast to the PURE collection, the RAW collection embraces oak wood's natural essence, preserving knots, cracks, and organic textures to highlight its unfiltered beauty and authenticity.



BRASA VASE

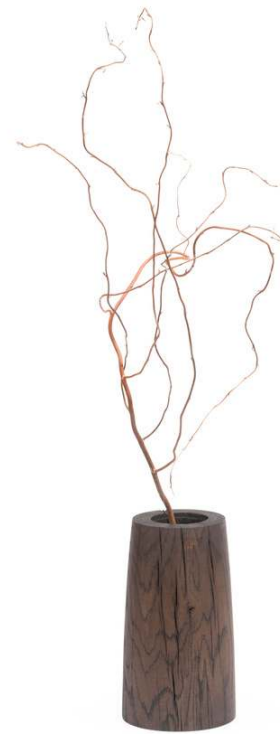
Crafted from a single block of **solid oak**, this stunning BRASA vase embodies a robust and substantial style, intentionally revealing its natural fissures. Available in four warm, natural colors ranging from pristine oak to deep charred black, each BRASA vase includes a glass container for displaying fresh flowers. As the inaugural piece of the Atelier Collón collection, it exemplifies timeless design and exceptional craftsmanship, blending technical precision with a distinctly handmade feel.

Available in 2 sizes.



CHARRED BLACK OAK





CHESTNUT OAK



NATUREL OAK

OAK WOOD



CHARRED BLACK



CHESTNUT



MARRON



NATUREL

BRASA VASE 25

Height	25cm
Diameter top	11cm
Diameter bottom	14,5cm
Opening diameter	7cm
Depth opening	21cm
Weight	2,5kg
Material	Solid oak
Glass container included	Yes

BRASA VASE 41

Height	41cm
Diameter top	11cm
Diameter bottom	14,5cm
Opening diameter	7cm
Depth opening	21cm
Weight	4kg
Material	Solid oak
Glass container included	Yes



SAUL VASE INDOOR / OUTDOOR

Introducing the SAUL vase, a refined counterpart to the BRASA vase, embodying the same robust elegance with a touch of sophistication. Handcrafted from a single piece of **solid oak**, the SAUL vase features a more delicate shape with rounded edges at the base, while maintaining its massive, sturdy presence. Nodes and cracks in the wood are intentionally left visible, adding to its natural charm.

The SAUL vase is also available in a **concrete** version, offering a more architectural expression. Cast in a specially developed concrete blend, it brings a raw yet refined materiality, suitable for both indoor and outdoor use throughout the year.

Available in four natural oak finishes, from light natural tones to deep charred black, each wooden vase is handmade and includes a glass insert for displaying fresh flowers. The concrete version is equally supplied with a glass insert, allowing the object to function with the same versatility.

The SAUL vase is a distinguished addition to the Atelier Collón collection — merging timeless design with material honesty and enduring craftsmanship.

Available in 2 sizes.





CONCRETE



OAK WOOD



CHARRED BLACK



CHESTNUT



MARRON



NATUREL



NATUREL OAK

SAUL VASE 25

Height **25cm**
Diameter **14,5cm**
Opening diameter **7cm / 11cm**
Depth opening **21cm**
Weight **2,5kg / 5kg**
Glass container included **Yes**



CHESTNUT OAK

SAUL VASE 41

Height **41 cm**
Diameter **14,5cm**
Opening diameter **7cm / 11cm**
Depth opening **21cm**
Weight **4kg / 8 kg**
Glass container included **Yes**



SAUL LIGHTING

For the design of this lamp, we envisioned the SAUL lighting collection as a testament to technical precision and design finesse. Each lamp in this collection is meticulously crafted from carefully selected **solid oak** beams, reflecting our deep passion for both woodworking and innovative design.

Featuring an elegant design with rounded edges, these fixtures seamlessly blend robustness with sophisticated aesthetics. Available in three sizes and four natural colors that enhance the wood's grain, the SAUL collection effortlessly complements any interior. We equipped each lamp with a carefully chosen LED bulb for optimal lighting performance.

Embracing the natural beauty of oak, nodes and fissures are intentionally left visible, allowing light to filter through and enhance the wood's intrinsic allure and organic growth patterns. This approach underscores the craftsmanship and unique appeal of each artisan-crafted piece in the SAUL series.

Available in 3 sizes.



SAUL LIGHT 17

Height excl. bulb	17cm
Diameter	14,5cm
Weight	1,5kg
Bulb specifics	LED G125 E 27 fitting Dimmable
Cord	Linen
Cord length	160cm
Switch	Dimmer
Socket & plug	Standard for EU
Environments	Indoor dry location

SAUL LIGHT 25

Height excl. bulb	25cm
Diameter	14,5cm
Weight	2,5kg
Bulb specifics	LED G125 E 27 fitting Dimmable
Cord	Linen
Cord length	160cm
Switch	Dimmer
Socket & plug	Standard for EU
Environments	Indoor dry location

SAUL LIGHT 41

Height excl. bulb	41cm
Diameter	14,5cm
Weight	4kg
Bulb specifics	LED G125 E 27 fitting Dimmable
Cord	Linen
Cord length	160cm
Switch	Dimmer
Socket & plug	Standard for EU
Environments	Indoor dry location



OAK WOOD



CHARRED BLACK



CHESTNUT

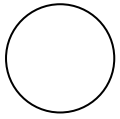


MARRON



NATUREL

BULB



WHITE



SMOKE



CHARRED BLACK



CHESTNUT

MARRON

NATUREL





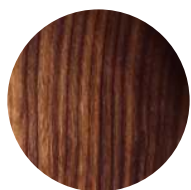
MATERIALS & FABRICS COLOR PALETTE

At Atelier Collón, we thoughtfully selected a spectrum of warm and inviting wood types for our collections, ranging from **American walnut** to natural and charred **French oak**, all finished with safe, eco-friendly products.

We ensure that these colors perfectly complement our designs, including the fabrics for the lampshades and cushions. Our material palette also includes a special **concrete** composition, developed exclusively for our outdoor-indoor pieces. Its natural texture and refined depth harmonize seamlessly with our wooden finishes, extending the same quiet, architectural presence across the entire collection.

Our commitment to perfection is evident in every detail of our craftsmanship, all proudly made in Belgium.

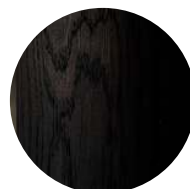
AMERICAN WALNUT



OAK



CHARRED BLACK
OAK



EBONY
OAK



CHESTNUT
OAK



MARRON
OAK



NATUREL
OAK

CONCRETE



LAMPSHADES



LINEN



MOUTON



FELTÉ

CUSHIONS



BOUCLÉ



TOILE

Please note that the colors displayed on screen or in print may vary from reality. For accurate representation, we recommend referring to the physical samples provided.



0% VOC

Volatile Organic Compounds (VOCs) are harmful chemicals commonly found in many paints and finishes. At Atelier Collón, we are proud to use 0% VOC finishes on all our objects. This reduces the risk of indoor air pollution, ensuring that our designs are safe for your health.

CARE INSTRUCTIONS

WOOD It is recommended to clean the wood with a damp cloth. Avoid using abrasive materials that could scratch the surface. We advise against using aggressive chemicals, as they may cause damage. Regular dusting will help maintain the natural beauty of the wood.

Wood is alive and may move when humidity fluctuates in the environment. To maintain its long-term stability, avoid extreme changes in temperature.

CONCRETE Clean the concrete surface by scrubbing gently with water and a soft brush. If preferred, you may also allow the concrete to weather naturally over time — its patina will only deepen its character. Avoid using bleach (javel) or corrosive substances, as these can damage the material and affect its finish.

LAMPSHADES To maintain the lampshade, regular dusting is recommended.

CUSHIONS Please note that the cushions are recommended for hand wash only.

All Atelier Collón collections are intended for indoor use only, unless explicitly indicated as suitable for outdoor use.



VASE INSTRUCTIONS

If you want to use the vase to display fresh flowers, it is recommended to use the included glass container to hold the water and place it inside the vase. This way, you can enjoy the beauty of the flowers while protecting the vase from potential water damage.

The concrete vase is designed with a small drainage hole at the base to prevent water from accumulating and freezing.

When used outdoors, it is recommended to remove the supplied glass insert before freezing temperatures occur. This helps avoid damage caused by frost.





HANDCRAFTED FOR PERFECTION

Please notice the objects of Atelier Collón are handmade and so they often showcase unique and distinct differences that set them apart from mass-produced or factory-made objects. Variations in grain, color and size are natural signs of handcraft, and -small- cracks can occur.

Overall, the appeal of our handmade objects lies in their uniqueness, artisanal craftsmanship, and the story behind each creation, making them sought after by those who appreciate the beauty of individuality and artistic flair.

SUSTAINABLE WOOD SOURCING

We use only premium woods that grow in forests designated for the production of renewable wood. These forests are carefully managed to ensure sustainability, allowing us to source high-quality materials while preserving the natural environment. By choosing renewable wood, we support eco-friendly practices and contribute to the conservation of our planet's resources. Our commitment to sustainability ensures that each piece crafted from these premium woods is not only beautiful but also environmentally responsible.

'SHOU SUGI BAN' TECHNIQUE

'Shou sugi ban' is a traditional Japanese wood preservation technique that involves charring the surface of wood to enhance its durability and resistance to various elements.

The term "shou sugi ban" translates to "burnt cedar board."

The process involves burning the surface of the wood using an open flame until it turns black. After the charring, the wood is cooled, cleaned, and finished with natural oil to protect it further. The dark, textured appearance of charred wood gives it a striking and distinct look. Shou sugi ban is not only functional but also adds a touch of traditional craftsmanship and natural beauty to wooden structures, making it a sought after technique in contemporary design.



TEXTILE FROM FLANDERS

For centuries, Flanders has been celebrated for its textile weaving. Atelier Collón pays homage to this rich tradition by exclusively sourcing fabrics from this region for its cushions. These fabrics are specially woven for Atelier Collón.



COPYRIGHT

Our designs are protected by copyright law. This means that our original creative works, including the unique designs showcased in this catalogue, are safeguarded against unauthorized use, reproduction, or distribution. Each design reflects our dedication to innovation and artistic expression, and we take pride in maintaining the integrity of our creations.

By respecting our copyright, you are supporting the efforts of independent designers and contributing to the preservation of artistic rights. Thank you for valuing and honoring our creative endeavors.

CUSTOMIZATION

At Atelier Collón, we are also ready for custom work. We understand that your needs may be unique, which is why we offer the ability to create special, custom pieces that perfectly meet your needs.

For more information and to request a quote, feel free to contact us. We look forward to making your ideas a reality.

collón

SINT-MARTENS-LATEM
BELGIUM

www.ateliercollon.com
sophie@ateliercollon.com
+32 476 99 77 63

